



ADVANCED  
FORMULAS

INDUSTRY  
EXPERTS

SUPERIOR  
PERFORMANCE

INCREASE  
ECONOMY

PROFESSIONAL  
SERVICE

SAFE FOR ALL  
COMMON RAIL  
TIER 4 ENGINES



**Clean Diesel Additive**

This diesel fuel additive complies with the federal low sulfur content requirements for use in diesel motor vehicles (on-road) and non-road engines.

**Complete Fuel Treatment™ Extreme Formula  
Clean Burn Technology™**

- Removes Water from Fuel
- Prevents Coking & Carbon build up in EGR systems
- Reduces Active Regeneration & Extends Life of DPF's
- Improves Cetane Rating of Fuel by 4 to 6 points
- Provides Lubricity to meet or exceed all OEM Specifications
- Improves Fuel Atomization for Greater Efficiency - Clean Burn
- Cleans Fuel Injectors and Pumps
- Anti-Gel Protection+Wax Anti-Settling Agent lowers CFPP to -35°F to -40°F
- Dissolves gums, varnishes, and carbon deposits
- Stabilizes Fuel - Slows Oxidation of Fuel
- Inhibits Corrosion
- Everything Needed to Create a Premium Diesel Fuel
- Effective on Ultra Low, Low Sulfur Fuel and Biodiesel Blends

**Create Premium Diesel Fuel**

With Powerful Anti-Gel Formulation, Cetane Improver, Lubricity Additive, Water Eliminator, and Injector Cleaner **Complete Fuel Treatment™** is the ultimate in Hi-Tech Winter Protection.

**Save Money**

You no longer have to spend extra money on blended fuels during the winter season. Fuel economy lowers when using blended fuels. Using **Complete Fuel Treatment™** and straight #2 ULSD you will receive all of the protection that you will need.

**Water in Fuel Creates Gums And Varnishes**

Water in solution when mixed with any fuel creates gums and varnishes that can hang up injectors and clog fuel pumps. ULSD fuel holds up to 4oz. of water in suspension in a 40 gal. fuel tank  
**Complete Fuel Treatment™** chemically removes the water found in all diesel fuels. Removing the water reduces corrosion, leading to a smoother running and more dependable diesel engine.





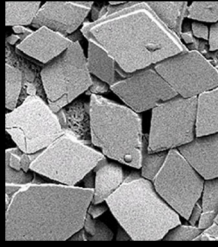
# Complete Fuel Treatment™

The Ultimate Hi-Tech Treatment and Conditioner for today's Diesel Fuels

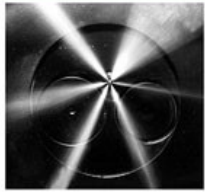
Complete Fuel Treatment™ is the Premium All-Season Fuel Treatment for Year Round Diesel Engine Operation.



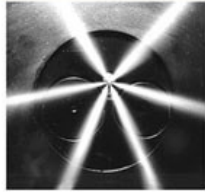
Low Sulfur Diesel Wax Crystals



Ultra-Low Sulfur Diesel Wax Crystals



Deposited injector – irregular spray pattern



Clean injector – regular spray pattern



**Winter - Protection**

Powerful Anti-Gel Formulation, Cetane Improver, Lubricity Additive, Water Eliminator, and Injector Cleaner makes Complete Fuel Treatment™ the ultimate in hi-tech winter protection.

**Prevention -**

Use Complete Fuel Treatment™ to prevent Fuel Gelling, Waxing, Fuel Line Freeze-up, Raise Cetane for easier starting and smoother, quieter running, Increase Lubricity for longer component life, Complete Fuel Treatment™ chemically removes the water found in all diesel fuel. Water that can corrode metal parts, water that mixes with the sulfur in fuel to create damaging sulfuric acid, water that can freeze in filters and fuel lines, water that supports the growth of spores and bacteria into a thick sticky slime that clogs fuel injectors and plugs fuel filters. By eliminating water, you can prevent all of these problems.

**Fuel Efficiency -**

Use Complete Fuel Treatment™ to clean Fuel Injector and Pumps to Improve Fuel Efficiency, Increase Power, Reduce Emissions, Reduce Engine Wear, to Eliminate the Harmful Effects of Water in the Fuel, and to Stabilize Fuel.

**Pour Point (PP) -**

Complete Fuel Treatment™ uses a combination of an organic solvent and an co-polymer that significantly depresses the PP(Pour Point) and lowers the CFPP (Cold Filter Plug Point) by inhibiting the growth of wax crystal within the fuel. Without Complete Fuel Treatment™ wax crystals form lattices and grow together to solidify (gel) the fuel. (See Figure 1) Complete Fuel Treatment™ will help hold wax in suspension, slowing the growth of crystals that plug filters in cold weather.

**Savings -**

Why spend the extra money to blend cold weather fuel when Complete Fuel Treatment™ does more for less. Blending of #2 Diesel Fuel with #1 Fuel or Kerosene is both expensive and counterproductive. #1 Fuel or Kerosene costs more per gallon than #2 fuel and has significantly less energy BTU's) per gallon. Your fuel mileage or efficiency actually drops when using blended fuel. You are paying more and getting less with blended fuel. Using Complete Fuel Treatment™ with straight #2 fuel can actually cost significantly less than using blended fuel plus you get all of the other benefits provided by using Complete Fuel Treatment™. Complete Fuel Treatment™ causes fuel to be atomized better by the fuel injectors for more efficient combustion and reduced emissions.

**Fuel System - Cleaner**

Complete Fuel Treatment™ also contains a powerful fuel system cleaner. It dissolves the gum, varnish, and carbon deposits that distort fuel injector spray patterns and damage delicate injector and pump components. Cleaning these parts allows your engine to operate with all the power and efficiency that the manufacturer designed into it.

**Safe -**

Complete Fuel Treatment™ is optimized for use in Ultra-Low, Low, and High Sulfur diesel fuels. It will not cause harm to any of the new (2007 and newer) engines or to the emissions devices used on these engines when used as directed. Complete Fuel Treatment™ provides maximum protection to pre-2007 engines using Ultra-Low, Low, and High Sulfur diesel fuels. The Cetane Improver makes cold weather starting easier, speeds engine warm-up, and reduces diesel knock.

**Lubricity -**

The lubricity component in Complete Fuel Treatment™ increases the lubricating ability of the fuel to reduce wear and extend life, slows the oxidation of fuel, thereby stabilizing it, contains no harmful alcohols that can damage gaskets and seals.

**Directions:**

For best results, use every time you fuel, adding contents to fuel tanks prior to fueling. The fueling process will ensure that Complete Fuel Treatment™ and proper mixing takes place. Use 32 ounces for each 250 gallons of fuel (1:1000 treatment ratio). First time users or in temperatures below 0°F you can use 32 ounces for each 125 gallons to improve Fuel flow and speed the cleaning process. When operating in extreme conditions (very cold weather) it is acceptable to use the 32 ounces per 125 gallons dosage on a regular basis.

**Cold Weather Operability:**

32 oz per 250 US Gallons will lower Pour Point up to 40 F and lower Cold Filter Plug Point by up to 30 F  
32 oz per 125 US Gallons will lower Pour Point up to 45 F and lower Cold Filter Plug Point by up to 40 F  
For more information please consult the Material Safety Data Sheet for this product.

**Note:** All used and unused product and its containers should be disposed of in accordance with all local, state, and federal regulations.

Package Size	Treats	Quantity/Case	Part Number
12 oz. Bottle	40 US Gallons	24 per case	10703
32 oz. Bottle	250 US Gallons	12 per case	10705
1 US Gallon	1,000 US Gallons	4 per case	10706
2.5 US Gallon	2,500 US Gallons	2 per case	10706A
5 US Gallon	5,000 US Gallons	1ea.	10707
55 US Gallons	55,000 US Gallons	1ea.	10709
275 US Gallons	275,000 US Gallons	1ea.	10700

**Keep This Product Out Of Reach of Children**  
Notice to Purchaser: Enertech Labs, Inc. provides no warranty of any kind with respect to the product whether express or implied including without limitation, the implied warranty of merchantability or fitness for any intended use or purpose; shall not be liable under any circumstances for any loss, damage, liability, injury or expense directly or indirectly resulting from, arising or related to the use or application of product; shall not be liable for consequential or incidental damages or loss of profits; and its liability shall be limited to replacement of the product.

Visit [www.enertechlabs.com](http://www.enertechlabs.com)